

ABOUT THE PRODUCT PH 3½-2½ FLOOR LAMP LIMITED EDITION | PROJECT IN DEPTH BEIT BEIRUT | MEET THE DESIGNER PAUL AMELOOT FOUNDER OF DELTA LIGHT



PH 3½-2½ FLOOR LAMP LIMITED EDITION

Louis Poulsen celebrates 90th anniversary of PH's pioneering three-shade system

One of the most ground-breaking light designs – PH's three-shade system – is turning 90. To mark the occasion, Louis Poulsen is launching a copper limited edition of the PH 3½-2½ Floor Lamp. As part of the three-shade family – now numbering over 20 lamps – the copper edition also provides beautiful comfortable lighting, as well as a unique opportunity to acquire a collector's item.

Designer and innovator Poul Henningsen developed his revolutionary three-shade system in 1926. Electricity was becoming increasingly common in Danish homes in the 1920s, but lamps had not yet been developed to suit the advancing technology. Poul Henningsen's invention of the three-shade system rectified this. The lamps were developed to illuminate the newly built Forum exhibition hall, one of Copenhagen's first functionalist buildings, designed by leading

architect Oscar Gundlach-Pedersen. The lamps hung from the ceiling 'like white birds flying through the gigantic hall', as a newspaper wrote in their review of the building.

Poul Henningsen based his three-shade design on the logarithmic spiral, in order to make optimal use of the point light source. Louis Poulsen put the three-shade lamp into production and spread PH's new mindset – glare-free light to make both homes and people more beautiful.

The 3½-2½ Copper Floor Lamp will be sold for a limited period from 1 October to 31 December 2016.

The lamp comes with two different top shades – one made of mouth-blown opal glass and one made of polished copper.

PUBLIC LIGHTING PROJECT OF THE YEAR 2016: BEIT BEIRUT

Highlights light up Beirut's concrete memories

1936 witnessed the emergence of a residential complex that dominated the Sodeco intersection. Exceptional in its luxurious architecture and interior, the Barakat building became a snipers' den throughout the 15-year-long civil war. Today, it stands tall as the city's first multifaceted cultural center, museum, and memorial space – Beit Beirut.

Upon entering the building, one would notice a central space where the existing structure meets its extension: A versatile lighting layout has been set for the numerous exhibitions. Track projectors rotating around a circular skylight's center provide accented & ambient lighting. Subtle lighting signals across the floor lead to a dominant ramp circulating vertically, linking the old structures to the new, and every story in between.

Architect Youssef Haidar paid tribute to the original atypical void by

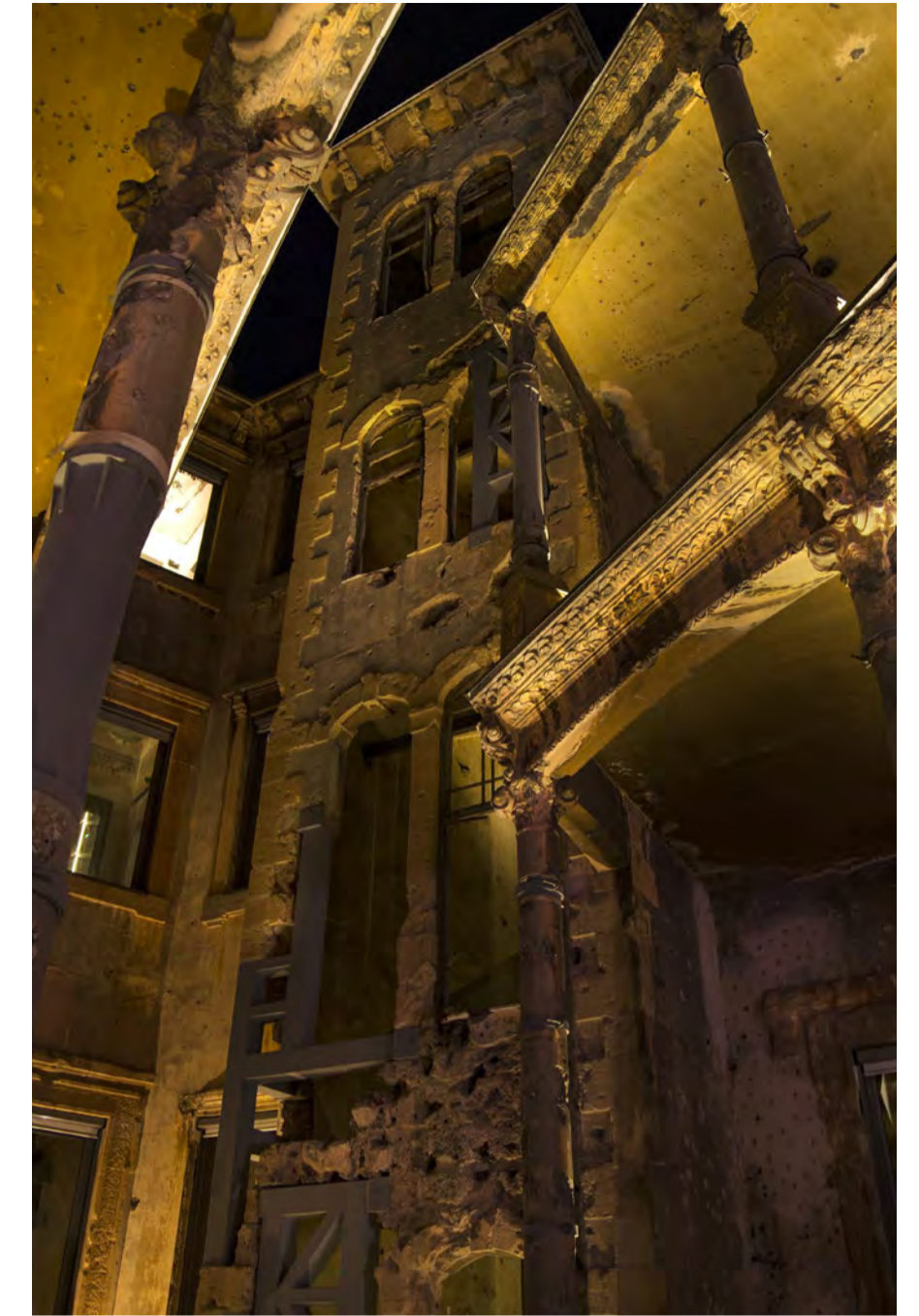
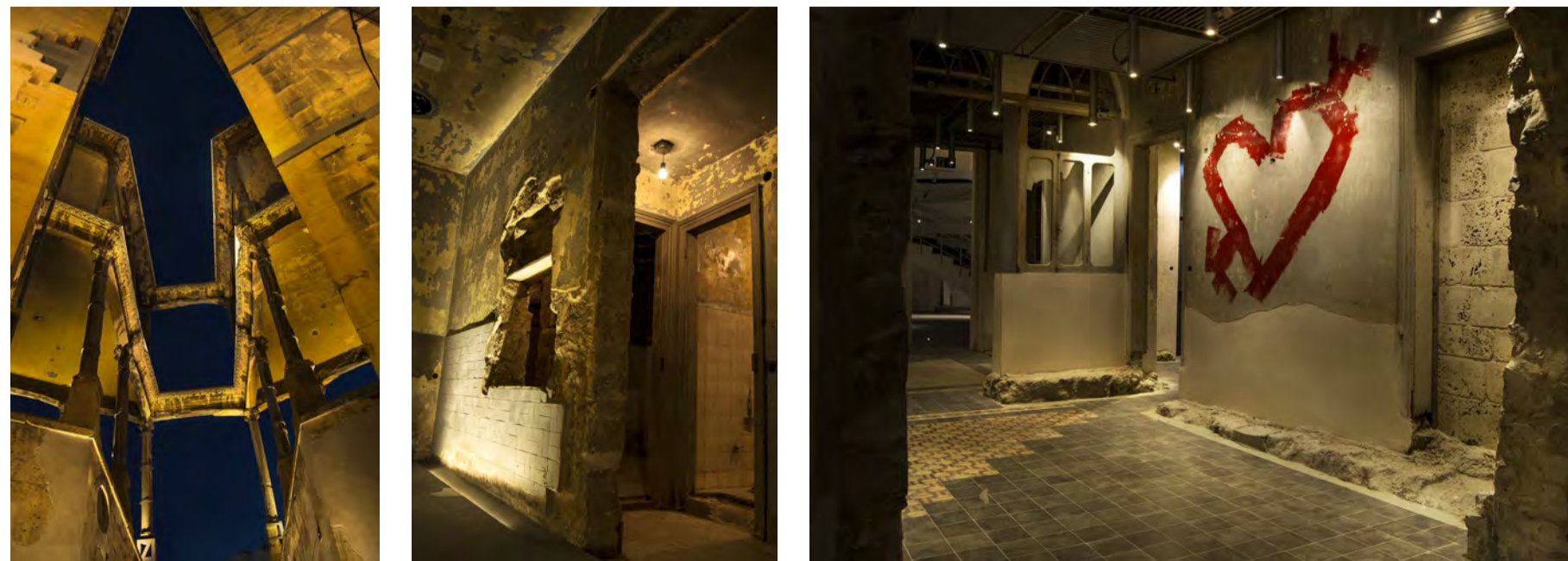
keeping the extension disconnected. The result, a centered atrium and skylight peering into the entrance all the way through to the basement. A narrow beam projector on the third floor directed towards the atrium created an accentuated moonlight effect.

Each floor serves as a chapter of the city's history. Highlights' expertise is best exemplified by providing dramatically adequate lighting, thus foregrounding the different emotions visitors might experience.

The first floor serves as a memorial. The challenge was to dramatize this episode with no false ceiling; by manipulating the raised floors to house linear luminaires, warm lighting drenched every scarred wall. Other areas contain dimmed bulbs hanging over disparate remnants to reanimate the hostile environment.



Photos by Mohammed Ibrahim©



Half restored, half preserved, gradual warmth in atmosphere is achieved on the second floor. Beams that run along the ceiling delineate two scenes using indirect light and suspended track projectors: That for the exhibition, where projectors reveal collected data depicting life and evolution in Beirut; the other of preserved motifs, tiling, and confessions left on walls by militiamen encapsulating the interior space via framing projectors.

With skylights penetrating the false ceiling, the directed linear lighting gives the impression of sunlight seeping through the third floor, while also illuminating the rooftop terrace situated above.

Lastly, with 3D mapping, projections of animated war scenes will highlight the façade's architectural features and accommodate various future events.



A LEGACY OF LIGHT

Paul Ameloot, founder of Delta Light

Inaugurated in 1989 by Paul Ameloot, Delta Light® strives to develop lighting solutions that enhance people's quality of life. The Delta Light team puts forth its extensive experience at the service of architects, interior and lighting designers, in order to reflect their vision fully and create an integrated lighting scenography within the architecture itself - Employing the right light in the most appropriate method to foreground architectural concepts.

Delta Light has been in the business for 27 years, working on small and large scale projects all around the world. Rather than focusing on short-term trends, the company creates a range of designs that withstand the test of time. Every time new collections are being launched, the in-house R&D team combines extensions and refinements of existing ranges with completely new designs. "We respect our past and work hard to keep our creative team alert, in order to stay ahead of the market." – Paul Ameloot.

Today, the company is still owned and managed by the Ameloot family, with Paul's sons Peter and Jan steering the global business: "As a family business, we love to share our passion, creativity and dedication. Our aim is to inspire people all around the world. We have a personal stake

in making your project successful. We strive to be the best in all we do." – Paul Ameloot.

Prior to Delta Light, founder Paul Ameloot owned Stereohouse, where he offered sound solutions for residential projects, nightlife and hospitality. In the eighties, it struck him that his clients started focusing on lighting and its application whether in terms of attracting attention or setting a certain mood. Paul saw an opportunity and went for it: He designed a custom rail and lighting system, which marked the beginning of a new journey. He presented one of his first designs – the Phantom – at a lighting fair in Hannover, which was received with great acclaim. Though a simple fixture, it still is part of the collection to this day. One could say that the disco scene inspired Paul to move into the lighting industry.

Paul Ameloot – "Inspiration comes from many different things: from art to architecture to aerodynamics, and much more. We are fascinated by movement - be it cars or planes, boats etc. – by the little things in everyday life; shapes and materials that are all around us. At the same time we love to be challenged by people's needs. We travel a lot, and meet people from all over the world. We love to listen to their lighting needs and expectations, and think about how Delta Light can provide a solution."



Spy



Tweeter



You-Turn



Delta Light Headquarters



Delta Light Headquarters