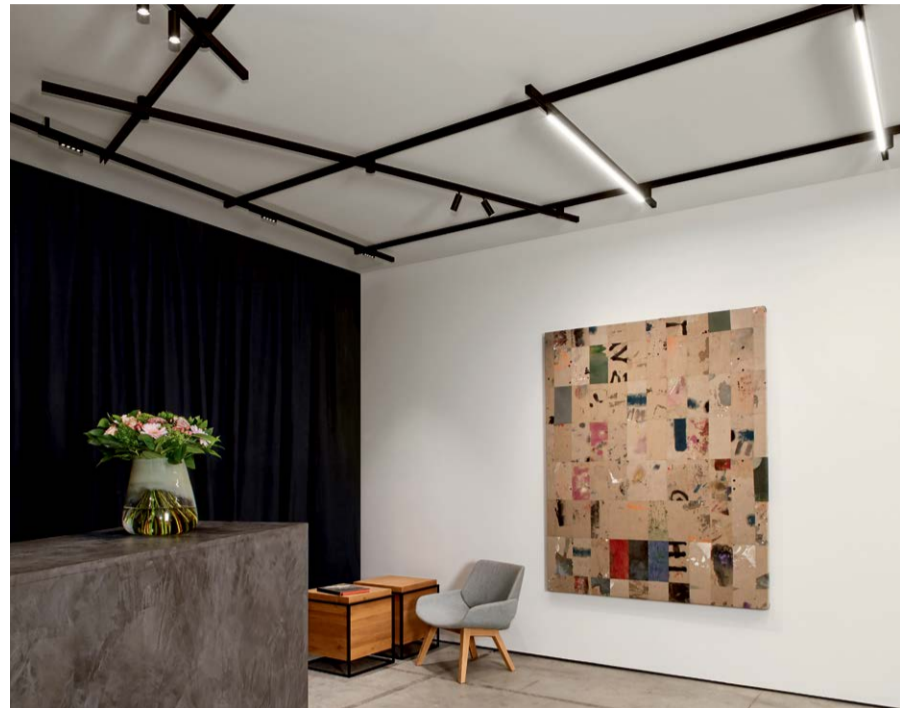


ABOUT THE PRODUCT MATRIX SYSTEM BY DELTA LIGHT | PROJECT IN DEPTH ABU DHABI MALL | MEET THE DESIGNER MAURICE ASSO



## THE GEOMETRY OF LIGHT

A paradigm shift in design

Delta Light is constantly redefining the art of lighting with enhanced versatility and customization.

The Shiftline M26 L Matrix system is their latest groundbreaking design created in that same spirit, blending a uniquely modern style with unlimited flexibility. A series of interconnected profiles that can be linked at will and in any shape, it creates a crisscross of adaptive lighting that can be tailored both in form and function, providing light in a wide range of configurations and allowing areas of focus or contrast to be arranged in perfect fluidity.

Clever add-ons to the Shiftline M26 L Magnetic profiles allow the coupling of multiple profiles to each other to create an incredible variety of structures. The 2P Connector not only assures the electrical connection, it also serves as a decorative element as its cylindrical shape is perfectly in contrast with the straight lines of the profile, adding to

the geometric theme. This contrast can be enhanced by choosing the gold colored finish for these nodes, a bold statement where design meets functionality. To complete the Matrix system, an additional ceiling fixation and a non-electrical connector allow for unlimited creativity as one is free to connect multiple profiles any way they want. Moreover, the new Side Supply is designed according to the looks of the 2P Connector, ensuring an aesthetic continuity that enhances the system's cutting-edge flair. The result is reminiscent of early modern art and its stylized use of basic lines, shapes and patterns. Each angle creates a captivating new direction for the eye to travel, as well as an axis of illumination that can even travel between spaces. The Piet Mondrian-like interplay of black profiles offers limitless choice in the use of both general and focused lighting, and beautifully contrasts with any ceiling all while blending into the room as an organic part of the décor.

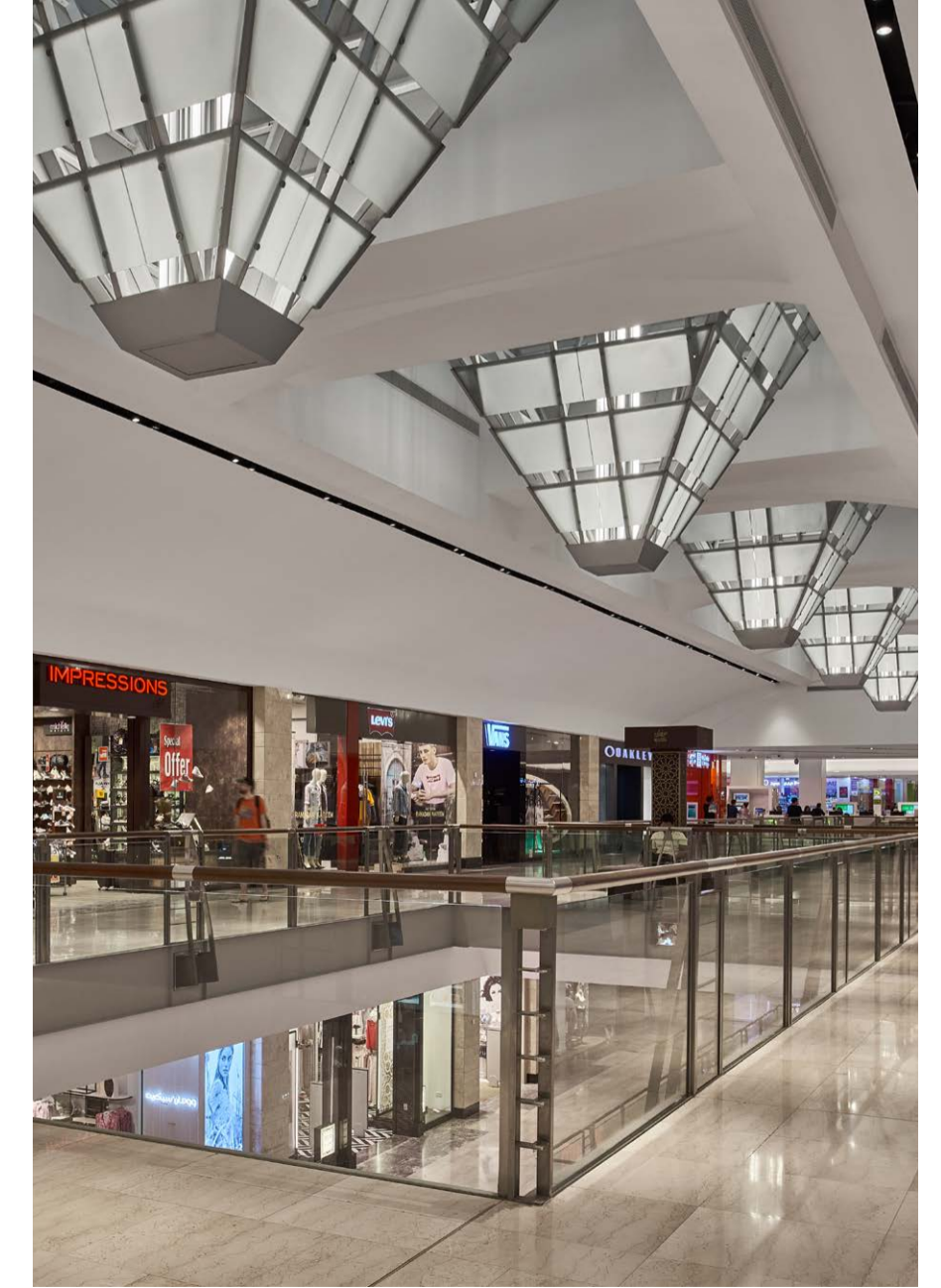
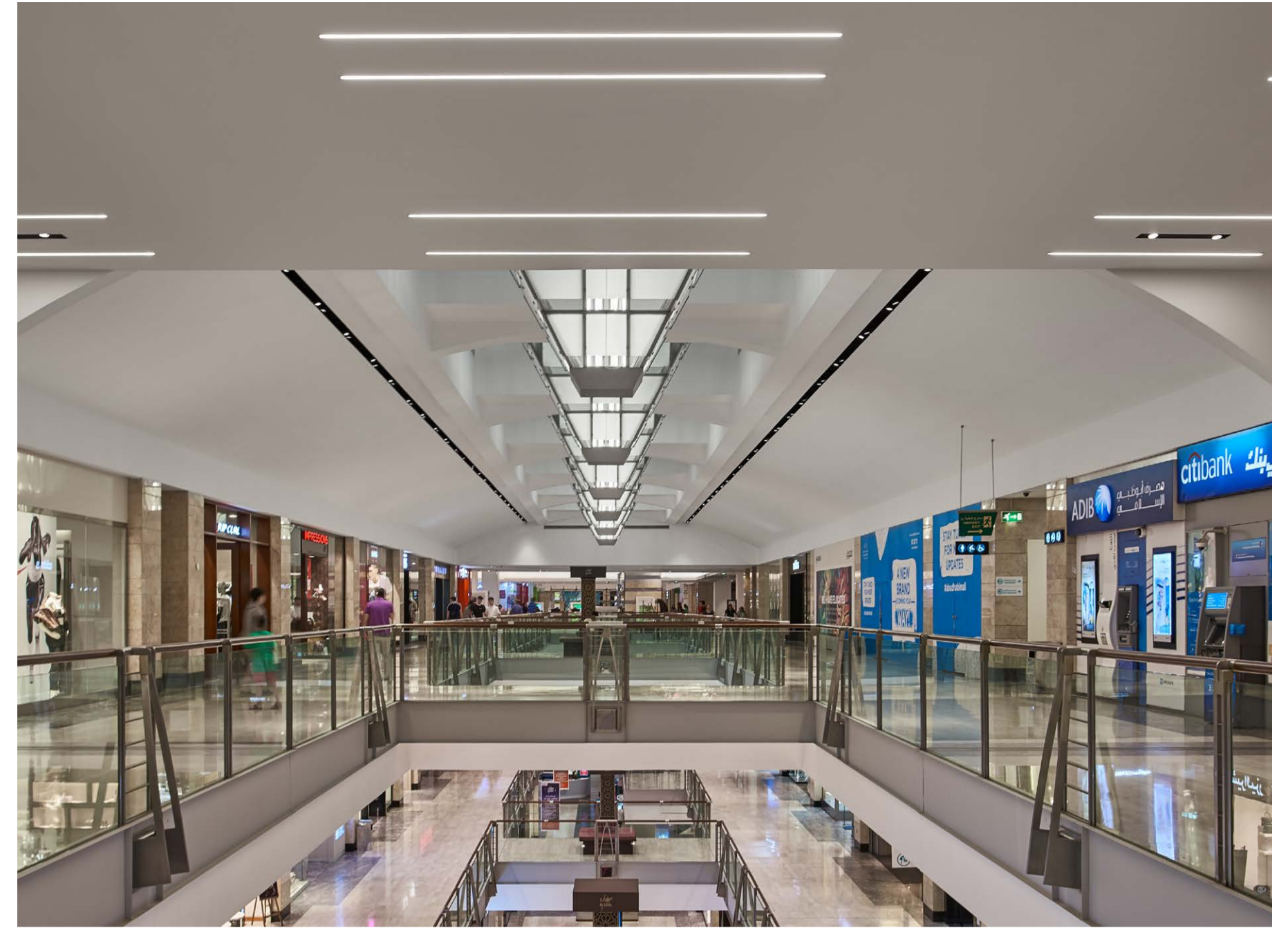
# IN A NEW LIGHT

## The renovated Abu Dhabi Mall

Opened in 2001, the prestigious Abu Dhabi Mall has stood as a landmark of the cityscape for almost two decades. It has welcomed visitors for a long time, serving as a veritable communal space for the city and its people. Its long history has endeared it to the citizens of Abu Dhabi and made it a staple of their daily lives, yet it also meant that it was time for a makeover in order to fully modernize it. The shopping mall recently underwent considerable renovations, and Hilights took over as the lighting designer with Lumiere Group as the supplier. It was a project of significant extent that aimed at upgrading and modernizing the quality of light in the mall while minimizing the quantity of luminaires and reducing the consumption. This was a long overdue step in the age of sustainability and environmentally-friendly LEDs. But bringing the mall into the 21st Century was not the only objective. Enhancing the shopping experience of visitors by providing more comfortable, functional yet discreet lighting was just as important, and a high CRI was used all over the mall in conjunction with black grooves that helped modernize the space, presenting a very clean and minimalistic design.

For this task, Viabizzuno's 094 system, Eco systems and C2 profiles were chosen, perfectly adapting to the wide, spacious layout of the mall. Their expansive yet non-intrusive light blended seamlessly into the neutral tone of the surrounding walls and floors, providing organically homogeneous general lighting. Some of the existing spots were also replaced with downlights from Regent.

The central spine that runs along the mall's ceiling was fitted with alternating lighting incorporated into the very arches themselves, while long lines of built-in spots were placed within the black grooves that run along the main thoroughfare before branching off into the depths of the mall. The interplay of white and black, as well as the parallel and perpendicular lines enhance the glaringly modern style that permeates the design both in shape and color. Smaller areas of focus received special attention with little islands of diffuse light draw the attention of visitors to specific zones of interest. A picture-perfect specimen of contemporary aesthetics, the lighting design of the Abu Dhabi Mall exemplifies the distinctive luxury, comfort and elegance of the modern lifestyle.





# THE HIGHLIGHT OF A CAREER

## Closeup on pioneers

Ever since the early 1990's, Highlights has strived to be the artistic link between lighting and architectural design. Lead by Maurice Asso; principal lighting designer - PLDA – SLL. It forms an accomplished practice of designers who are passionate about the lighting domain. Each project is a story that manifests a unique expression on what Highlights believes is best for an environment. The team expresses ideas with tangible materials through the ethereal process of light matter.

### What was the inspiration behind "the egg"?

"The idea was to extract the essence of the piece from the theme itself; culinary. We considered using different tools and elements to make this fixture while shifting from the vast term - culinary - into food itself. The egg was the perfect candidate, provided its unique form and components. The act of slicing a hard boiled egg resulted in different sizes and thicknesses orbiting around the yolk, whose absence was as crucial in order to form an abstract piece which could be translated into a design element; a suspended installation that communicates through a dichotomous relationship between positive and negative space.

### How was the concept implemented in the space?

While exploring the notions of perception and movement in space, a few questions were raised: how can we use the egg? Will it be suspended?

Will there be many of them? So we came up with the idea of integrating a whole set of egg slices into a piece that flies over, shows some dynamics through its movement, and adds to the space the light it requires, providing a reminiscence of the actual egg slicer and a little hint on the approach used to create the product."

### Can you give a briefing on the execution part?

Once we had a full working module, we started experimenting. Each slice was individually made and put together with special joints, slanting in different angles and placements within the whole piece. We began with brass, nickel and chrome plated frame covered with a white milky Plexiglass, then added a flexible LED light with special specifications, and prismex which emits light in two directions; upwards, ambient luminescence lighting the ceiling, and downwards, accent light on the table. We also included a dimming system to allow the creation of different moods.

### A chandelier that serves a certain usage?

Lighting is an experience. When it's a product, it should reflect or symbolize the object interpreted and the light it produces. So we should take into consideration that light has to be of a high, comforting quality. Eventually, the main purpose of a light fixture is to provide quality light and comfort, then add to the ambiance of the general architecture.

