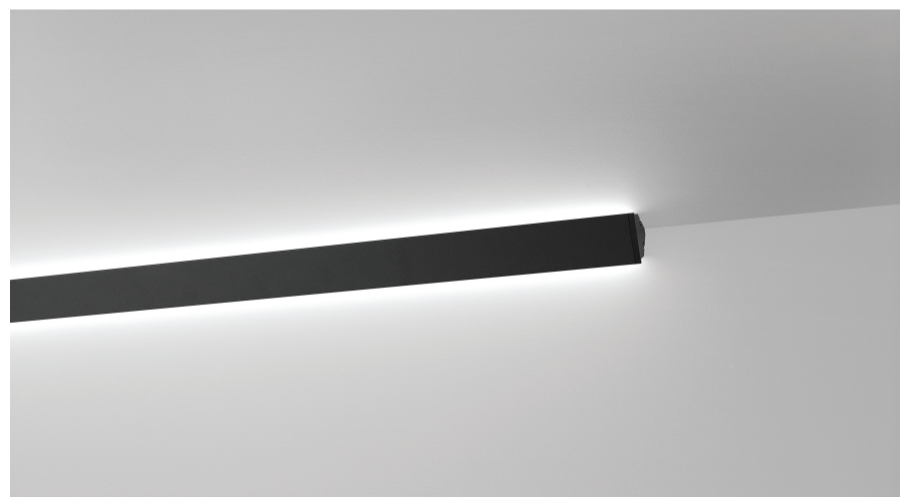


ABOUT THE PRODUCT CONNECT BY DELTA LIGHT | PROJECT IN DEPTH PRIVATE VILLA BY DORI HITTI ARCHITECTS | MEET THE DESIGNER MARTIN AZUA



On the cutting edge

Delta Light's latest flash of genius

Sometimes a good idea can be right under your nose and you never notice it. Connect is an innovative new range from Delta Light that leverages architectural edges to create planes of light that are seamlessly integrated into the space.

First shown on Interieur Kortrijk 2002 and introduced into the market in 2003, the first Connect range featured two fluorescent tubes that faced opposite directions. In essence, it was designed especially for corners and other empty spaces, making use of the architecture to optimize the lighting. Today's version of Connect has been miniaturized and can be fitted wherever walls and ceilings meet, or kept as a free-floating luminaire on any surface. The Connect series creates a balance of light on the very edges of a room; mounted directly into the corner or on a wall, this minimalistic profile generates a soft line

of light on one or both sides, transforming bare corners and spaces into decorative perimeters. Its sleek, minimalistic design and indirect light transform lighting from a centerpiece to a seamless part of the room, as though the glow were a natural, integral part of the space. The flexibility of the Connect makes it the ideal choice for any indoor setting, providing control over which sides are lit in a dualistic setup that fits perfectly with the overall architecture; either one wall is lit, or both; either the ceiling is lit, or the wall, or both; Either the bottom is lit, or the top, or both. The variety in lighting composition allows for both ambiance and whimsy, blending beautifully into the surroundings.

While Connect I balances on the edge between wall and ceiling or wall and wall, Connect A is designed to add subtle accents onto vertical surfaces, as a linear down-up light.

Lights on the hill

A luxury lifestyle by Dori Hitti Architects

Designed by Dori Hitti Architects Beirut with Lumiere Group as the lighting supplier, this brand-new villa is nestled in the verdant hills of Rabieh, its landscaped gardens blending organically with the surrounding nature. A multistoried house rises amid the lush greenery, each wooden terrace boasting crafted walnut lit with LED lighting, its edges glowing welcomingly.

Sculptural black metal stairs invite residents and guests up the patchwork statuarietto marble façade and into the heart of the villa, where the minimalist approach to architecture continues unabated, with well-defined outdoor and interior spaces laid out in a rhythm of harmonious geometric shapes. The pristine manicured grass runs between the house and the long two-part pool aglow with pin LEDs, creating a serene natural atmosphere where light reflects playfully on the surface of the water. Short olive trees and tall palms are equally lit with focused beams that bring out their verticality and add points of interest in the exterior layout.

The brightly lit interior beckons visitors inside, where modern design is free to spread its wings in wide spaces and high-end materials. The lighting brings to life the contrast of varying dark and bright tones, the interplay of wood and marble, with the ever-present flash of green here and there. Inside, the same deliberate shapes and visual style dominate, with each of the three floors featuring a unique atmosphere yet also staying true to the overall pure aesthetic. The interior decoration is signature DHA as well, boasting their distinctive minimalism that marries form and function with flair.

A private hanging gardens of the modern age, the villa is a shining haven of comfort and luxurious lifestyle with a spacious layout that matches its incredible views. Its brightly lit halls and delicately carved exteriors are a vision of trendy design, blending manmade perfection with natural beauty to offer residents the best of both worlds. It stands as the very latest residential landmark bearing Dori Hitti's prestigious signature, a monument to the sleek elegance that defines contemporary architecture and its most inspired pioneers.







The centerpoint of design

Martín Azúa lights up Vibia

Born in the Basque country, Spanish designer Martín Azúa has made his mark on the design scene with his uniquely grounded artistic style. Working between Barcelona and La Isla, his eclectic interests have taken him around the world and across a variety of disciplines. His work is featured in many exhibitions, including as part of major collections and museums such as the MOMA of New York or the Design Museum of Barcelona.

His craftsman-like designs and experimental techniques have won him many awards and accolades, but it is his signature approach and the mark it has left on the industry that best define him. A keen observer of nature, he has embedded its beauty into his designs. This connection to the land has also pushed him to preserve traditional workmanship through collaborations with a wide variety of craftspeople.

Martín joined forces with Vibia to design the aptly named Dots and Halo collections. The first is a collection of small wall sconces in the form of circular dots that together compose a melody of materials and lights. The radial and beam lamps offer great flexibility in design and atmosphere, creating truly personalized spaces with lots of functionality.

The second is a series of hanging LED lamps organized along four lines: the Halo Lineal lamp, the Halo Circular lamp, the Halo Jewel lamp and

the Halo Wall lamp. The collection blends the weightlessness of LED technology with minimalistic shapes and to produce ethereal lighting, shafts of white light hovering in the air. The flexibility provided by the simplicity of the setup allows for freeform design that can express itself in countless ways.

The Halo Circular collection boasts circular profiles that blend light and matter through the ingeniously discreet use of technology; indeed, the incorporation of LED lights gives more weight to the lighting, as though it were nothing but a light source free from any physical restrictions.

The Halo Jewel lamps take a slightly different approach, with straight and circular pieces that express light as a precious element, blending luxurious metals and crystalline shapes to create a sense of material beauty and subtle extravagance.

As for the Halo Lineal lamps, their linear design offers a lot of creative freedom in composition, creating a chaotic harmony of radiance.

Finally, the Halo Wall sconce lights are trace the outline of the glow projected between the lamp and its diffuser to become a unified whole, creating wall art drawn in light.

The collaboration between Martín Azúa and Vibia has produced yet another high-profile collection in the brand's prestigious catalog.

