

ABOUT THE PRODUCT ENTERO BY DELTA LIGHT | **PROJECT IN DEPTH** MASSIMO'S GELATO & CAFFÈ | **MEET THE DESIGNER** DANESI & BUZZONI



Enter a new world Endless options. One family.

Delta Light, a market leader and trendsetter in architectural lighting has recently unveiled Entero, its new range of lighting tools designed to arm architects and designers with all they need to create discrete yet diverse lighting schemes, all with just one family of luminaires. Entero is the lighting solution for all project types; from indoors to outdoors, from low to high ceilings, from wall washing to general or focused illumination, from providing power to creating an atmospheric setting. Entero enables architects and designers to create discrete but diverse lighting schemes throughout an entire project, achieving style continuity in all spaces. The base is three light units. Each is composed of a high-quality LED and a hybrid optical compartment. The LEDs emit uniform colour consistency, and the hybrid optics ensure a comfortable light with perfectly outlined beams, making it easy to integrate within a complete scheme. The lighting family

offers a series of options in a round or square format and is available in different power outputs with a choice of beam angles. Entero features adjustable luminaires, with or without trim, ideal for use indoors, outdoors, and in damp locations. For extra flexibility and project diversity, options such as Soft Dim, Tunable White, and wall wash are available. In addition to its four symmetrical beam angles, Entero also provides wall washing optics for the even illumination of vertical surfaces. Designers can exploit the patented Bartenbach optic to produce a perfectly uniform lit surface from a fully-recessed luminaire. Extending the Entero philosophy, the wall wash version is also available in different shapes, sizes, and installation options, perfect for any lighting project. Entero is yet another innovative lighting solution in the line of Delta Light's unique blend of ambiance, elegance, functionality, and design.

A taste for the finer things

When lighting becomes an experience

A little piece of Italy at the heart of Dubai's Mall of the Emirates, Massimo's Gelato & Caffè is a concept gelato and coffee shop designed by AMG Design Consultants. The lighting design side of things was handled by the talented Nadine Baalbaki, who helped project leads Anna Maria and Mario Giangrasso create a brightly lit and inviting mood, one that aims to draw people in organically and enhance their customer experience.

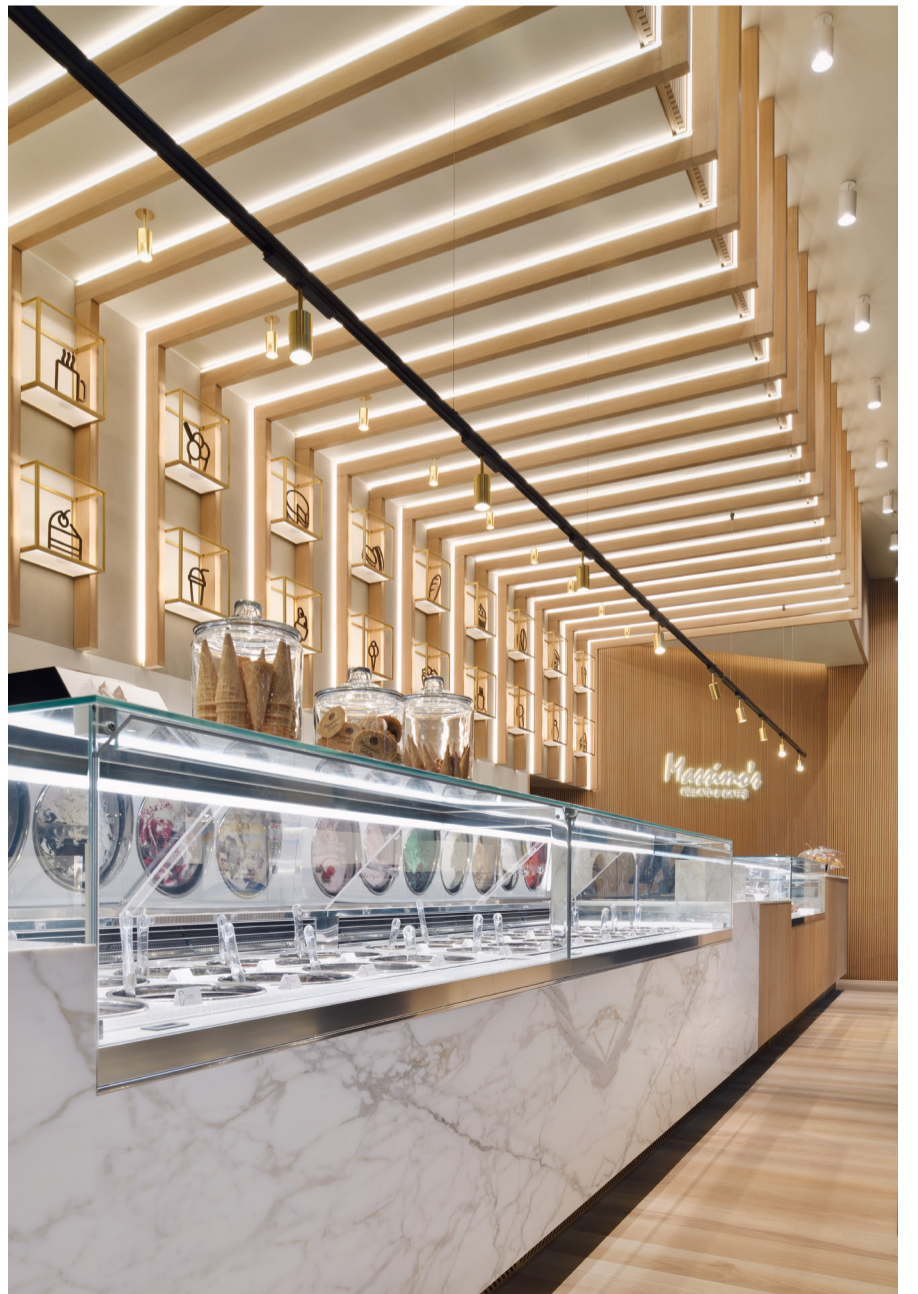
The project presented several challenges that were overcome through the intricate use of QBO lighting supplied by Lumiere Group UAE. Massimo's is a dual venue: a gelato and a coffee shop. The lighting needed to reflect both, the cool fresh feel of a gelato and the warm feel of the coffee shop at the same time, all while keeping a vibrant and welcoming atmosphere. The location added another challenge, namely being in a relatively dark zone in the mall. Another constraint was size; with a relatively small space, the lighting needed to be discreet and integrated with the architectural elements to complement the design.

To tackle these challenges, different lighting layers were put into place. The first of these was the counter top lighting: the use of small brass led projectors fixed on a suspended track ensures that the light is distributed evenly over the display areas guiding up the visitors through the varied delicacies on display.

The second layer was the structural lighting: the horizontal and vertical brass structure is an important design element. Running across the ceiling and coming down the wall, the repetitive element is accentuated by linear LED profiles.

The third layer was the merchandise lighting: directly fixed on the ceiling, the small elegant brass LED projectors serve as a pointer that visually attracts visitors to the different merchandise located on the wall, thereby increasing the visibility of different products. Creating a mosaic of functional and aesthetic lighting, AMG Design Consultants brought Massimo's Italian flair to vibrant life.







Great minds think alike

How two design giants came together

The exceptional collaboration between Davide Danesi and Leonardo Buzzoni began in 2007, when the two worked together for a lighting design company in Bologna. The synergy was immediate. Together, they combined their unique expertise to form DaBù, the realization of a common dream.

The two designers share a similarly winding career path. Born on 04/07/1960 in Ravenna, Danesi obtained his diploma as a mechanical expert and worked as a technician for over 15 years before switching to his true passion: in 2007, he decided to pursue his dream and devoted himself to the design, planning and construction of lighting bodies, also collaborating with famous names in the sector.

As for Buzzoni, he was born on 01/09/1961 in Ferrara. At 14, he began working at an electrical engineering company as a technician. Carrying on this profession for 15 years, he collaborated with the most famous national and international lighting brands, making a mark for himself with projects in the worlds of architecture and fashion. That is when he met Davide Danesi, and the two would go on to redefine their careers together.

Since then, the two have collaborated on a variety of high-profile projects that boast a unique blend of their two styles. Among these are unique pieces they created for Platek.

The first is Chiodo, a family of bollards in three heights that can generate an intense light particularly suitable for scenic lighting of gardens or greenery, or create magical compositions by using elements of different heights, such as small forests of pure light. Chiodo can be fixed in the ground by its spike, or on the floor through a small base. The product is available also in the applique version, which radiates the wall with a soft light and creates a unique and suggestive atmosphere.

The second project for Platek was Eterea, which takes inspiration from the classic lantern to create an incorporeal volume, made up only of light. By its diffused light, it perfectly fits on terraces, gardens and arcades. can be placed directly on the ground or fixed to a wall by means of its bracket.

Eterea is now also available in battery-powered version. The last showcase of the duo's talent under the Platek brand is Passo, a product that catches the attention and can amaze with its ability to generate shadows and reflections. One version highlights the shapes and the volume of the product, while another reflects the colours of the surrounding environment, generating unexpected flashes. In its simplicity and purity, Passo can be installed in any type of environment, perfectly fitting into it.

Together, Davide Danesi and Leonardo Buzzoni have reached a creative equilibrium that produces surprising and daring results.



Chiodo / Eterea



Passo



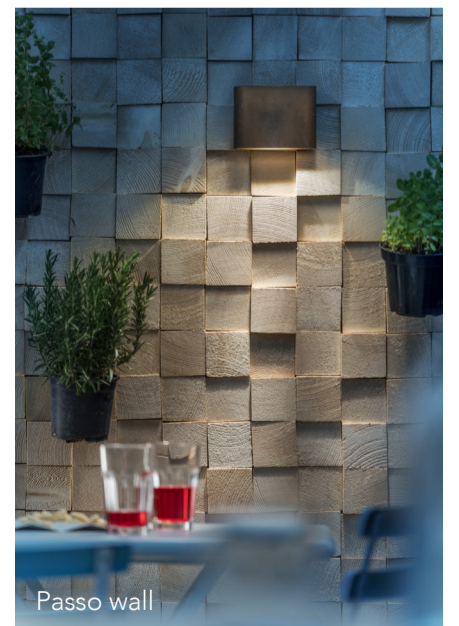
Chiodo



Eterea



Eterea wall



Passo wall