



www.lumieregroup.net
www.lumshop.net

THE LATEST ADDITION TO LUMIERE GROUP'S PORTFOLIO
THE IMPORTANCE OF RETAIL LIGHTING
PATERA AND NJP - NEW LIGHTING BY LOUIS POULSEN
PLATEK LIGHT TRAINING - ITALY

NEWSLETTER | DEC. 2015

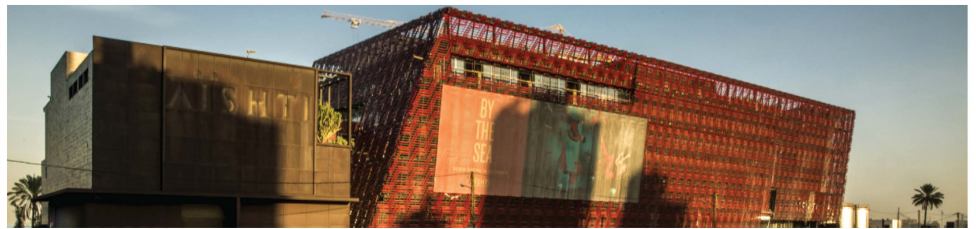
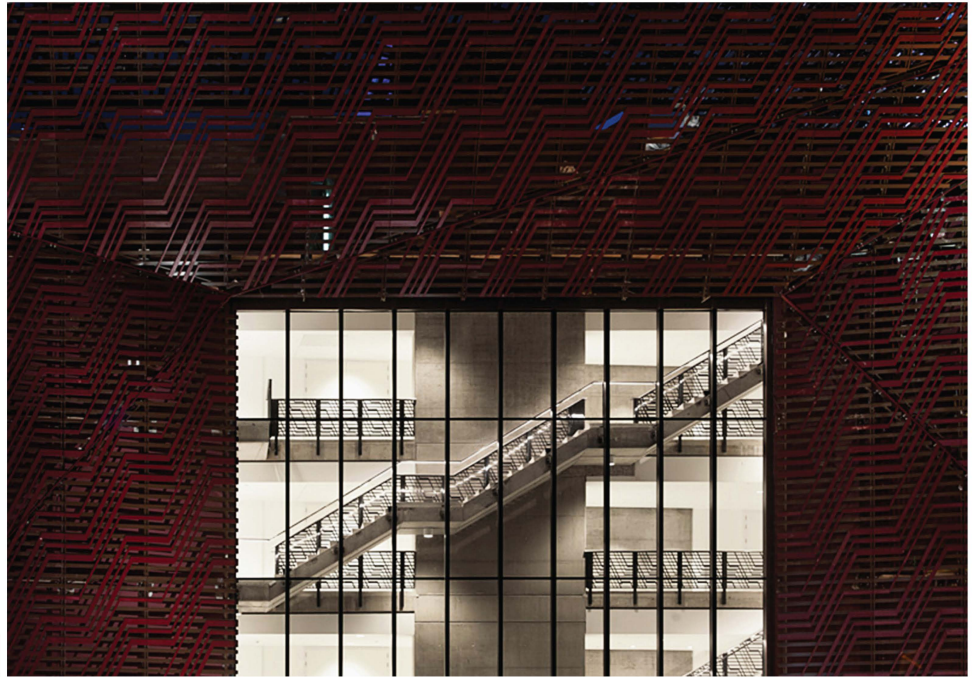
THE LATEST ADDITION TO LUMIERE GROUP'S PORTFOLIO

Aishti Foundation Seaside

Lumiere group's newest project in collaboration with Lumiere Studio, were commissioned to light the 80,000 square meters in size for the Aishti Foundation.

An innovative retail concept that combines art and shopping into one mega-complex. With its aluminum tubular structure applied to the building as an exoskeleton, the distinctive red façade envelops the edifice in a scrim of multiple layers and patterns, lit by Lumiere Group using Erco lightscan LED 72 Watt spotlights in coordination with the International Architectural office of David Adjaye Associates in London, UK.

Lumiere Group provided lighting services to 87 shops by catering a "lighting menu" using "Viabizuno" 094 Profile and LED spots highlighting the luxury brands display items, while designing lighting for the interior landscape and the foundation's colossal façade.

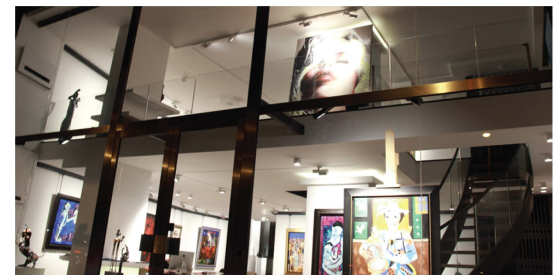


THE IMPORTANCE OF RETAIL LIGHTING

Adequate lighting is one of the most important aspects of in-store design. Lighting not only brings attention to a display, it also warms it up making it more appealing. Proper lighting applications in retail will create a better and easier experience for shoppers.

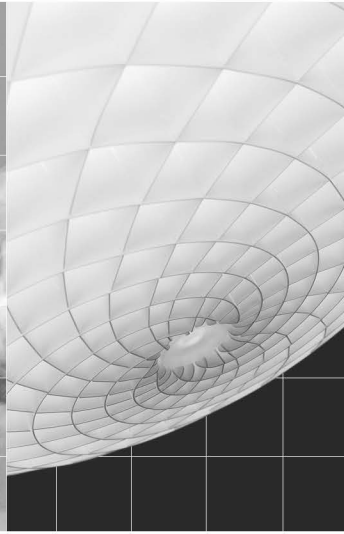
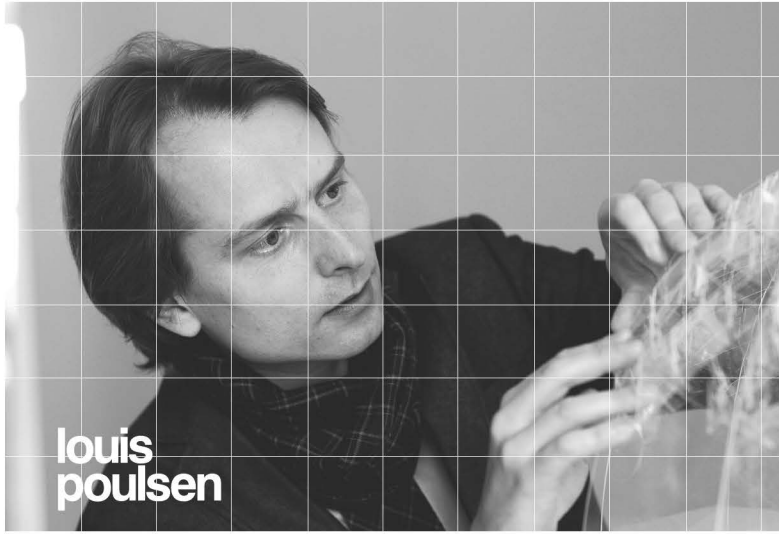
Today, more lighting advantages have been brought to the retail industry by the LED technology; now we can light-up a store while consuming much less power and heat, thus saving on the electricity, re-lamping and maintenance bills. Add to this the advantages of an up to 98% color rendering and you will never need to step outside to check the real colors anymore.

Designers are having a blast with this technology, as LEDs can translate any design concept into reality, due to its flexibility, continuity and limitless possibilities.



Benefit now from a free consultation by appointment with one of our retail lighting specialist at Lumiere Studio Sin El Fil by calling 01 491 173 or by visiting our website at www.lgstudio.net

NJP AND PATERA - NEW LIGHTING BY LOUIS POULSEN

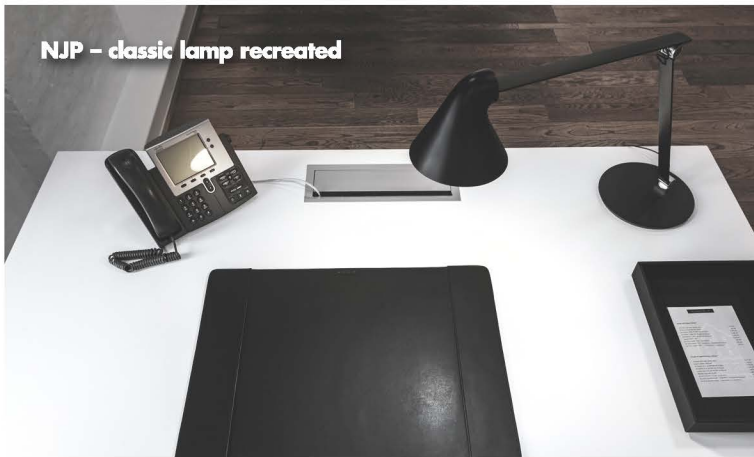


Patera – a natural focal point

**louis
poulsen**

PATERA Suspension: Taking nature as his inspiration, the elite designer Øivind Slaatto has created a new and unusual light through a creative partnership with Louis Poulsen.

“Patera is intended to serve as a modern chandelier – a light that unifies the space and makes any room a more human place to spend time in.” The ball-shaped pendant floats like a majestic focal point in the room, spreading light in all directions. At first glance, it seems to be just a white, perforated ball, but closer inspection reveals its detailed design featuring a host of circles, angles and holes.



NJP – classic lamp recreated

NJP Table Lamp: Louis Poulsen is launching a new interpretation of the architect lamp. The ultra LED lamp is the result of a new partnership with Japanese design company Nendo, and designer Oki Sato.

All the familiar details are present: the springs, the angled shade, the rotating head and the clamp for attaching it to the table. Yet everything is very different.

NJP Table is a new interpretation of the classic architect lamp, with functional qualities that have helped make it the archetypal work lamp and extremely popular in workplaces and private homes. In Oki Sato's lamp, the glare-free light distribution, flexibility and soft reflected light have been recreated in an ultra-minimalist Japanese design.

Available in white or black, powder coated.

PLATEK LIGHT TRAINING - ITALY

Lumiere Group, Lumiere Studio and Highlights team visited Platek Light Company in Brescia, Italy. Our team got introduced to the novelty products of Platek and the fixtures to come in 2016. They saw the manufacturing process and quality inspection measures taken to produce die-cast aluminum components for all lighting fixtures of Platek.

About Platek:

Platek Light is an Italian manufacturer producing lighting fixtures designed for urban and outdoor architectural lighting.

Their lighting systems are produced using high quality components that are reliable for their excellent performance in every environmental condition. The wide range of products, the technical design, the careful selection of optical devices and the performance of the fixtures make it possible to guarantee the appropriate installation in different locations: residential or public places, pathways, historical and modern urban areas, commercial and private outdoor areas.

As part of the Donati Group, Platek Light takes advantage of the know-how of its mother company “Metalpres”, specialists in aluminum die-casting, to produce the components for their luminaires both designed and manufactured in Italy.



OUR LOCATIONS

<p>LEBANON GHOBEIRY SECTEUR 7, 75TH ST BUILDING 28 P.O.BOX: 13-5278 BEIRUT - LEBANON T: +961 859 055 F: +961 859 120</p>	<p>SIN EL FIL BLVD. SIN EL FIL ARISS BUILDING P.O.BOX: 13-5278 BEIRUT - LEBANON T: +961 484 216 F: +961 484 241</p>	<p>JORDAN HOUSSAINI CENTER PARIS STR. SHOUFFIA P.O.BOX 841123 AMMAN 11181, JORDAN T: +962 6 5864 980 F: +962 6 5865 017</p>	<p>KSA JEDDAH VILLA 28, AL SHUHADA STR. AL-HAMRA DISTRICT P.O.BOX 6185 JEDDAH, 21442 KSA T: +966 12 284 0830 F: +966 12 284 0835</p>	<p>RIYADH OFFICE 15, DABAS STR. AL SULAIMANIAH DISTRICT P.O.BOX 54966, RIYADH 11524, KSA T: +966 11 463 5101 F: +966 11 463 5103</p>	<p>QATAR REGENCY BUSINESS CENTER -2 AL BALADIYA STREET, OLD SALATHA UNIT 401 4TH FLR., BLDG. 3052 P.O.BOX 6255, DOHA T: +974 44 519 745 F: +974 44 507 137</p>	<p>UAE BUSINESS BAY, AL ABRAJ STR. BURLINGTON TOWER 25TH FLOOR, #2502/3 DUBAI, UAE T: +971 5297 98198</p>
---	--	--	---	---	---	--